

Installation Guide

Marshal Reporting Console

Contents

Introduction	2
Supported Installation Types	2
Hardware Prerequisites	2
Software Prerequisites	3
Installation Procedures	3
Appendix: Enabling IIS	8

Marshal Reporting Console (MRC) is a server-based tool that allows you to create reports on data logged by MailMarshal SMTP, MailMarshal Exchange, and WebMarshal. You can report on system activity, threats, and blocked or quarantined items.

This document applies to MRC 2.5. It provides information about supported environments and prerequisites, as well as instructions for installation of the product.

For usage instructions, see the product Help. For late-breaking information and change history, see the Release Notes included with the product.

INTRODUCTION

Marshal Reporting Console is a server-based tool that allows you to create reports on MailMarshal SMTP, MailMarshal Exchange, and WebMarshal system activity, threats, and blocked or quarantined items.

SUPPORTED INSTALLATION TYPES

You can install Marshal Reporting Console in a number of scenarios. M86 Security suggests type 1 below as a free solution for most customers and trial installations. Type 2 below can be used by larger organizations that have the appropriate infrastructure and SQL Server licenses.

You can **upgrade** seamlessly from Marshal Reporting Console 2.1 to Marshal Reporting Console 2.5. For more information about upgrading, see the Release Notes.

1. Standalone Server Installation (SQL Express 2008 R2 Advanced):

- Install IIS, SQL Express Advanced Edition with Reporting Services and Marshal Reporting Console on a single server.
 - This server could be the intranet web server.
 - The MailMarshal and/or WebMarshal logging databases can be hosted on this or another database server.
 - The MailMarshal Spam Quarantine Management and Web Administration Console could be installed on the same server.
- **Advantages:** No cost for SQL Server software. Simplified installation and configuration (the MRC installer package includes SQL Express 2008 R2 Advanced, and configures MRC to use this instance).
- **Disadvantages:** SQL Express does not support abort of running reports. SQL Express supports limited export formats (PDF and Excel only). SQL Express Advanced must be installed as a package; you cannot add SQL Reporting Services to an existing SQL Express installation. *(However, it may be possible to install SQL Express Advanced as a second instance on a server that already has SQL Express installed.)* Database size is limited to 10 GB.

2. Standalone Server Installation (SQL Server 2005, 2008, 2008 R2):

- Install IIS, SQL Server, SQL Reporting Services, and Marshal Reporting Console on a single server. This scenario also applies if you want to use a pre-existing installation of SQL Express Advanced Edition.
 - This server could also host the MailMarshal and/or WebMarshal logging databases.
 - This server could host other IIS applications such as the MailMarshal Spam Quarantine Management and Web Administration Console (load permitting).
- **Advantages:** Full range of features. Single SQL server for all databases. Simplified installation and configuration of Reporting Services (when SQL Server and SSRS are installed at the same time, a default configuration is created). No limitations on database size.
- **Disadvantages:** License required for SQL Server and SQL Reporting Services.

Note: It may also be possible to install MRC and SSRS using separate servers for the main SQL instance and SSRS instance. This scenario would only apply to a large enterprise with existing infrastructure and licenses.

HARDWARE PREREQUISITES

The following are hardware prerequisites for the Marshal Reporting Console installation. Note that if Reporting Console databases are installed on the same computer as the MailMarshal SMTP, MailMarshal Exchange, and/or WebMarshal logging databases, the requirements for the product databases must also be considered. For information about MailMarshal and WebMarshal database sizing, see the *User Guide* for each product.

- Pentium, 3GHz
- 2 GB RAM
- Free disk space to support installation temporary files and databases (10 GB free recommended)

- If installing standalone, SQL Express requires a minimum of 600 MB of free disk space for installation (in addition to database storage space)

SOFTWARE PREREQUISITES

The following are software prerequisites for the Marshal Reporting Console installation. Note that if Reporting Console is installed on the same computer as SQL Server, the SQL Server requirements must also be considered.

- Windows Server 2008 SP2, 32 or 64 bit versions, or Server 2008 R2 (installed as a 32 bit application)
- Windows 7, 32 or 64 bit versions (installed as a 32 bit application)
- Windows Vista Business or Ultimate, SP2, 32 or 64 bit versions (installed as a 32 bit application)
- Windows Server 2003, SP2 or above (32 bit versions, excluding R2)
- Windows XP, SP3 or above (32 bit versions)
- SQL Server:
 - Mixed Mode authentication enabled
 - 2005 SP3, 2005 Express Advanced Edition SP3
 - 2008 SP1, 2008 Express Advanced Edition SP1
 - 2008 R2, 2008 R2 Express Advanced Edition
- Internet Information Services 5.1 or above
- .NET Framework 3.5 SP1
- The Marshal Reporting Console installer automatically installs the Microsoft Report Viewer.
- Supported browsers (for client workstations):
 - Internet Explorer 7 or above

Note: To successfully connect to the MRC site using Internet Explorer from a computer running Windows Server 2003 or above, **uninstall** Internet Explorer Enhanced Security Configuration (IEESC) on the computer you are browsing from. IEESC blocks active content such as the ASP.NET code used by MRC. This behavior is by design. Adding the MRC site to “safe sites” may not resolve all issues created by IEESC.

If you cannot uninstall IEESC, browse from another workstation, or use another browser such as Firefox.

You may also wish to enable “Intranet Settings” (disabled by default with some recent Windows service packs) in order to avoid repeated authentication prompts.
 - Firefox 3.6 or above

INSTALLATION PROCEDURES

Installation varies depending on the selected installation type.

Permissions

The SQL Report Server application requires write access to the Temporary ASP.NET files folder (by default, a path like C:\WINDOWS\Microsoft.NET\Framework\V2.0.050727\Temporary ASP.NET Files). The .NET framework installer included with SQL Reporting Services correctly sets this permission for the Network Service account. SQL Express Advanced also correctly sets this permission. **However** if you previously installed .NET framework, and then install SQL Reporting Services, this permission may not be set.

- If you encounter an error referring to permissions on this folder, use Windows Explorer to set the permission. For more information, see this [File Permissions](#) topic from SQL Server Developer Center.

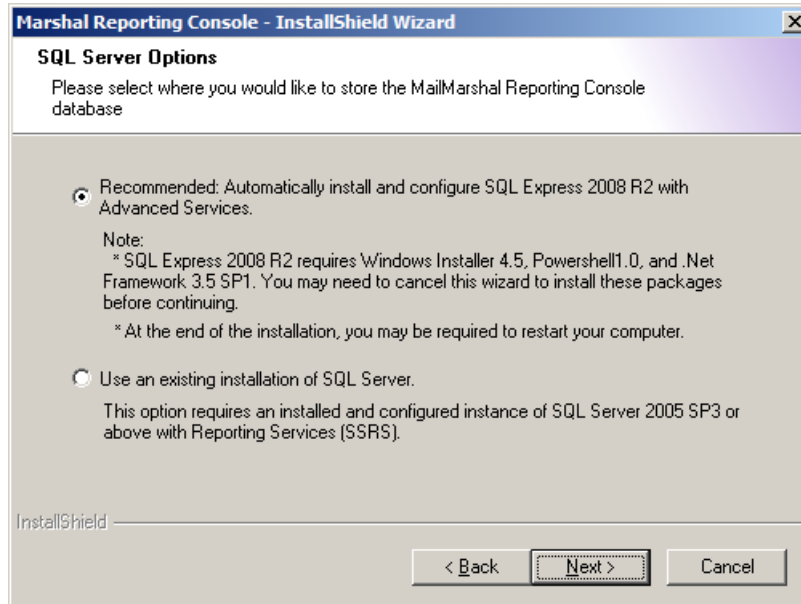
Standalone Installation (SQL Express Advanced)

To install Marshal Reporting Console, including SQL Express 2008 R2 Advanced, complete the following steps.

1. Obtain the MRC installer (download from M86 Security).
2. If necessary, obtain .NET Framework 3.5 SP1 (download from Microsoft).

On the target server:

3. Log on to the server as an account with local administrator permissions.
4. Enable IIS (if it is not already enabled). For information about enabling IIS on various Windows versions, see [Appendix: Enabling IIS](#). Include Windows Authentication and ASP.NET support.
5. Enable Windows Power Shell.
6. Install .NET 3.5 SP1.
Note: You **must** enable IIS before installing the .NET framework. If you do not, SQL Express will not install correctly. For more information and troubleshooting help, see M86 Security Knowledge Base article [Q12054](#).
7. Install Marshal Reporting Console.
 - A. On the **SQL Server Options** window, choose to install SQL Server 2008 R2 Express.



- B. On the **SQL Server Password** window, enter and confirm a strong password for the administrative account (SA), which will be created during installation.
- C. Setup now proceeds to extract and install SQL Server 2008 R2 Express. The server instance name is MRC_SQLEXPRESS. This process can take 15 minutes or longer. It does not require additional input.
Note: If the SQL Server installation encounters any errors, it opens a report in a new window.
- D. Continue with the **Installation Location** and **Ready to Install** windows. Setup installs the MRC program files.
- E. On the **Impersonate User Details** window, enter the Windows account and password that Reporting Console will use for access to local resources. This should be a local administrator. If you plan to add users from the domain environment, this account must also be a domain administrator.

- F. On the **Email Configuration** window, enter details of an email server that Marshal Reporting Console will use to deliver reports and administrative messages.

Note: The Sender Email address must be allowed to send mail through the specified server. The address should be valid for delivery and monitored by an administrator.

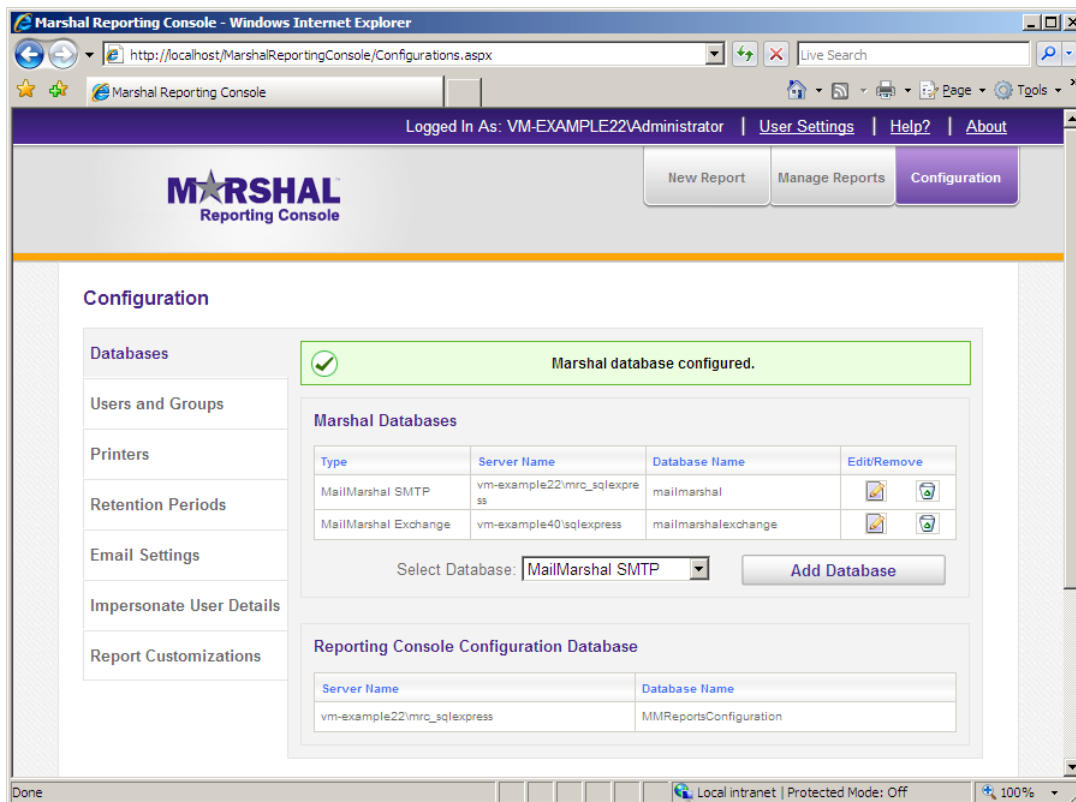
You can enter a user name and password for SMTP authentication, if required by the email server.

Click **Test** to verify the details by sending an email. Click **Next** to continue.

- G. Setup now connects to SQL Reporting Services and installs the reports.
- H. On the final window of the wizard, accept the defaults to start services and open the Console in a browser window.

Tip: See the note about Internet Explorer Enhanced Security Configuration in the Software Prerequisites section. To complete configuration, you may need to connect from another workstation.

8. Connect to the Marshal Reporting Console website using an account that is an administrator of the server. On the **Configuration>Databases** tab, add MailMarshal and/or WebMarshal databases that you want to report on, and users who can access the website. To learn more about the options on this tab, see Help.



Same Server Installation (SQL Server 2005 or 2008)

The detailed instructions in this section assume that you have already installed and configured SQL Server and SQL Reporting Services. Marshal Reporting Console is installed on the same computer as SQL Reporting Services.

M86 Security has validated the following settings for SQL and Reporting Services in this scenario:

- Enable TCP/IP connections to SQL Server.
- Enable Mixed Mode authentication on SQL Server.
- Enable SQL Server Browser. This allows the Marshal Reporting Console installer to find the SQL Server.
- When you install Reporting Services at the same time as SQL Server, by default the Reporting Services installation creates appropriate settings. You can review these settings after installation using Reporting Services Configuration Manager. Ensure that Reporting Services is initialized before you install MRC.

On the target server for Marshal Reporting Console:

1. Install Marshal Reporting Console.
 - On the **Setup Type** window, select a Virtual Directory name used to connect to the web application.
 - On the **Database Server Location** window, select or enter the server name - do not use (local). To specify a named instance, you can use the format **servername\instancename**. You may need to specify the instance if the server includes multiple instances, or if you are using a pre-existing installation of SQL Express (by default SQL Express creates an instance named `SQLExpress`).

Enter a SQL username and password.

Note: The user account must be allowed to create databases.

- On the **Impersonate User Details** window, enter the Windows account and password that Reporting Console will use for access to local resources. This should be a local administrator. If you plan to add users from the domain environment, this account must also be a domain administrator.

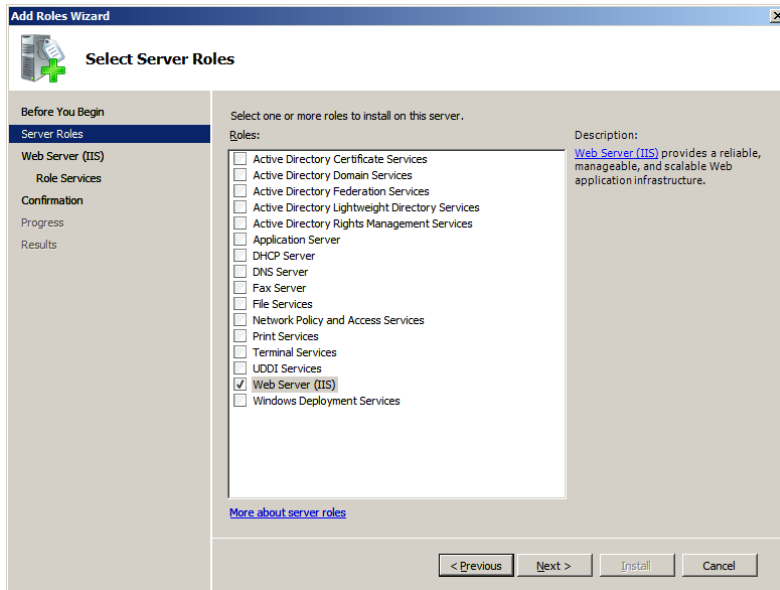
- o On the **Email Configuration** window, enter details of an email server that Marshal Reporting Console will use to deliver reports and administrative messages.
 - Note:** The Sender Email address must be allowed to send mail through the specified server. The address should be valid for delivery and monitored by an administrator.You can enter a user name and password for SMTP authentication, if required by the email server. Click **Test** to verify the details by sending an email.
 - A. On the **SQL Report Services** window, enter the web address of the SQL Reporting Services website, and enter a deployment folder location. If necessary you can find the path using IIS Manager.
 - Tip:** For instance, if the name of the server is `intranetserver` and you installed SQL Server as the default instance, the entry should be `http://intranetserver/ReportServer`
 - B. On the final window of the wizard, accept the defaults to start services and open the Console in a browser window.
 - Tip:** See the note about Internet Explorer Enhanced Security Configuration in the Software Prerequisites section. To complete configuration, you may need to connect from another workstation.
2. Connect to the Marshal Reporting Console website using an account that is an administrator of the server. On the Configuration tab, add MailMarshal SMTP and/or WebMarshal databases that you want to report on, and users who can access the website. To learn more about the options on this tab, see Help.

APPENDIX: ENABLING IIS

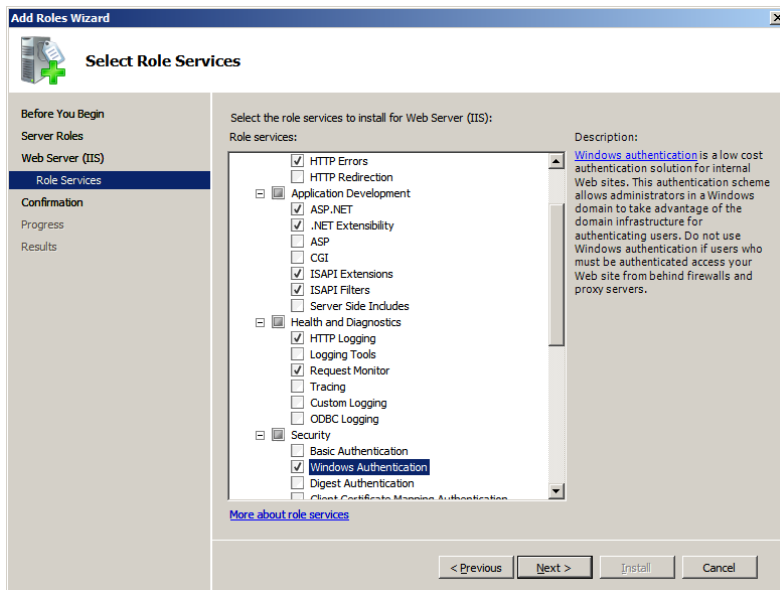
This section briefly outlines the steps and options required to enable Internet Information Services on supported Windows versions.

Windows Server 2008

1. Open Server Manager (Start>Administrative Tools>Server Manager).
2. Expand **Roles**.
3. Add the Role **Web Server (IIS)**.



4. On the Select Role Services window, in addition to the defaults, add Role Services **ASP.NET** and **Windows Authentication**.

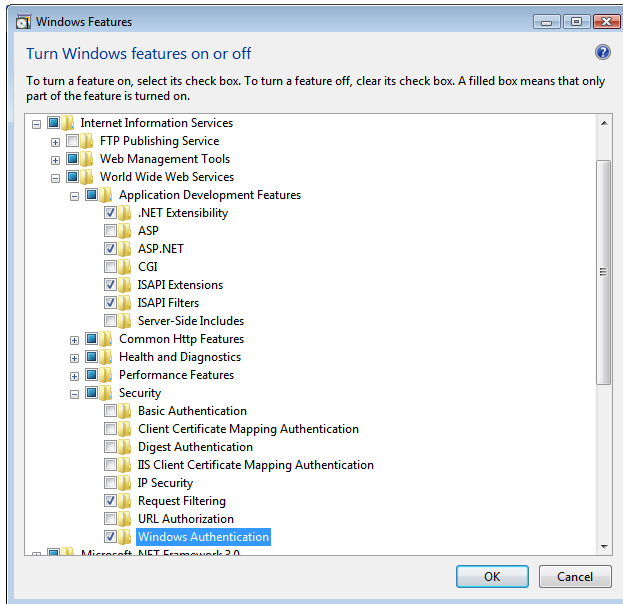


5. Complete the wizard to enable this component.

Windows Vista

1. Navigate to Start>Control Panel>Programs and Features>Turn Windows features on or off.
2. Select **Internet Information Services**.

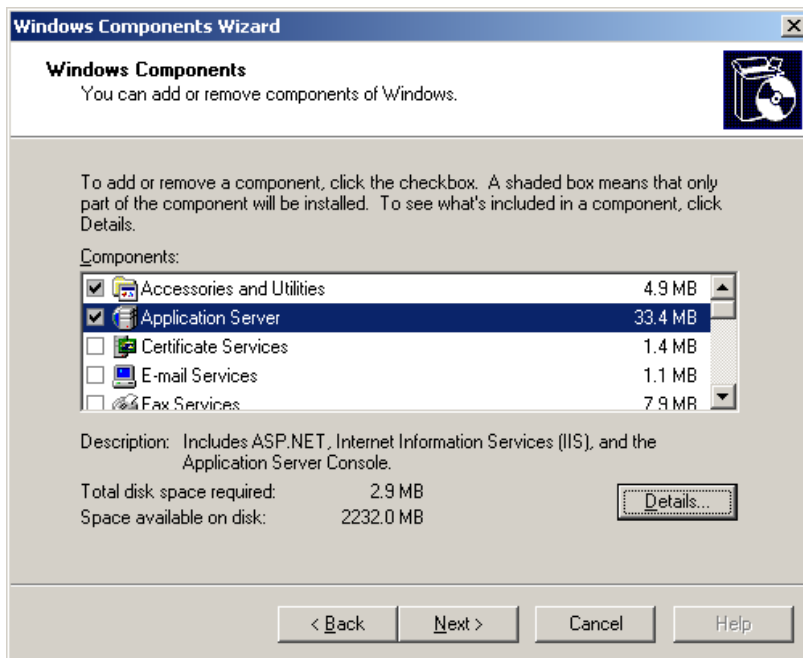
- Expand Internet Information Services, expand the required feature sets, and select **ASP.NET** and **Windows Authentication**.



- Click **OK** to enable this component.

Windows Server 2003

- Navigate to Start>Control Panel>Add/Remove programs>Add/Remove Windows components.
- Select **Application Server** (the default limited set of options is all that is required).

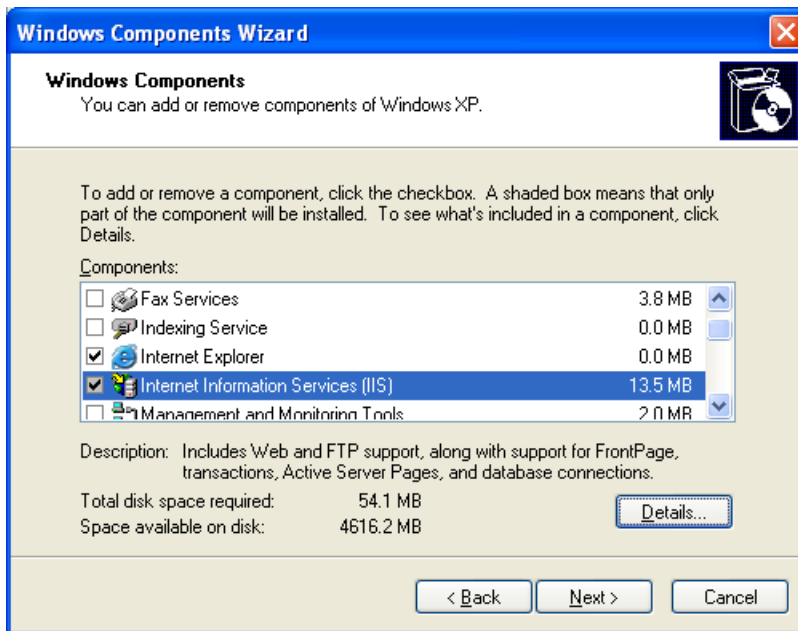


- Complete the process to enable this component.

Windows XP

- Navigate to Start>Control Panel>Add/Remove programs>Add/Remove Windows components.

2. Select **Internet Information Services** (the default limited set of options is all that is required).



3. Complete the process to enable this component.

ABOUT M86 SECURITY

M86 Security is a global provider of Web and messaging security products, delivering comprehensive protection to more than 20,000 customers and over 16 million users worldwide. As one of the largest independent internet security companies, we have the expertise, product breadth and technology to protect organizations from both current and emerging threats. Our appliance, software and cloud-based solutions leverage real-time threat data to proactively secure customers' networks from malware and spam; protect their sensitive information; and maintain employee productivity. The company is based in Orange, California with international headquarters in London and offices worldwide. For more information about M86 Security, please visit www.m86security.com.

TRY BEFORE YOU BUY

M86 Security offers free product trials and evaluations. Simply contact us or visit www.m86security.com/downloads



Corporate Headquarters
828 West Taft Avenue
Orange, CA 92865
United States

Phone: +1 (714) 282-6111
Fax: +1 (714) 282-6116

International Headquarters
Renaissance 2200
Basing View, Basingstoke
Hampshire RG21 4EQ
United Kingdom

Phone: +44 (0) 1256 848080
Fax: +44 (0) 1256 848060

Asia-Pacific
Millennium Centre, Bldg C, Level 1
600 Great South Road
Ellerslie, Auckland, 1051
New Zealand

Phone: +64 (0) 9 984 5700
Fax: +64 (0) 9 984 5720

Version 03.29.11